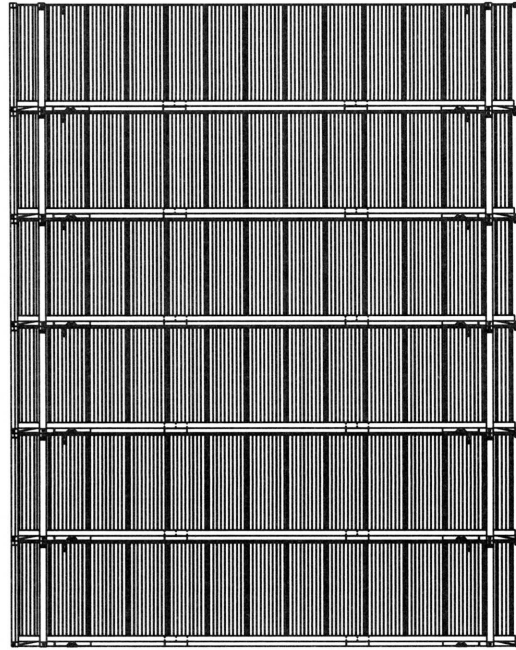
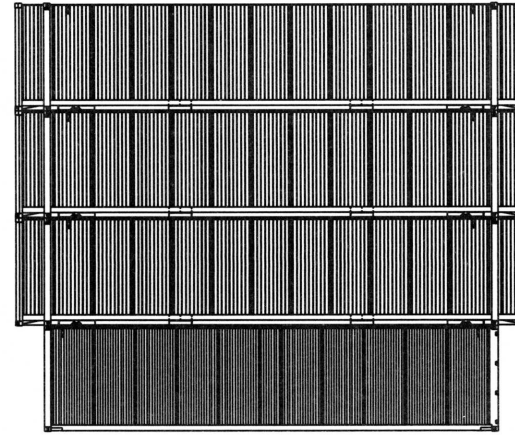


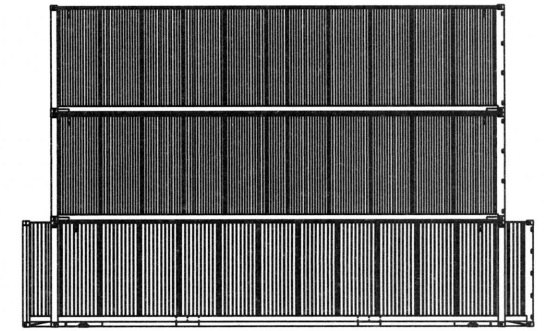
Scheme # 1  
- 7 High Stacking (30480 kg) / supported at 45' position



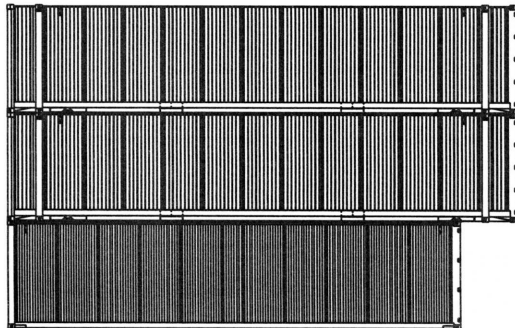
Scheme # 2  
- 6 High Stacking (34000 kg) / supported at 45' position



Scheme # 3  
- 3 High at 40' position (30480kg) / supported at 40' position



Scheme # 4  
- 3 High at 40' position (30480 kg) / supported at 40' & 45' position



Scheme # 5  
- 2 High at 45' position (30480 kg) / supported at 40' position from both extreme ends

