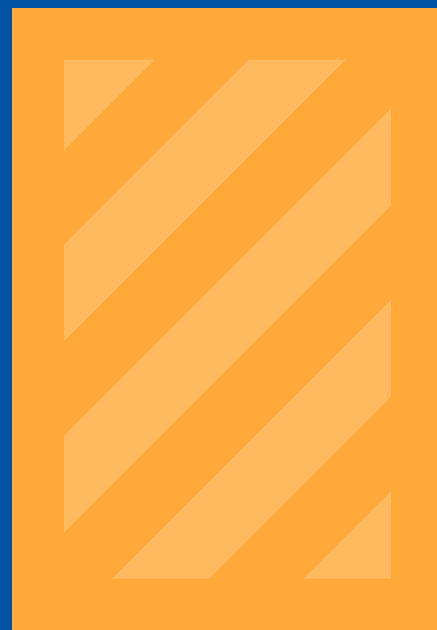


45FT DRY FREIGHT CONTAINERS



45FT DRY UNIT



UNIT45's 9ft 6in high palletwide dry freight container offers the highest cubic capacity and payload of any standard 45ft container design. By using special high-strength steels and lightweight floor materials, an extremely low tare weight has been achieved. With their chamfered corner posts and euro corner castings, all UNIT45

containers are road-legal throughout the EU and are also well suited for transport on cellular and non-cellular container ships, ro-ro vessels, inland waterway barges and rail wagons. The precise specification of our 45ft palletwide container can be modified to meet differing needs.

DRY UNIT TYPE A+: LIGHTWEIGHT BAMBOO FLOOR SPECIAL INTERMEDIATES & HIGH DOORS

external dimensions

length: 13716 mm
width: 2500 mm
height: 2896 mm

internal dimensions

length: 13556 mm
width: 2438 mm
height: 2695 mm

door opening

door width: 2416 mm
door height: 2656 mm

ratings

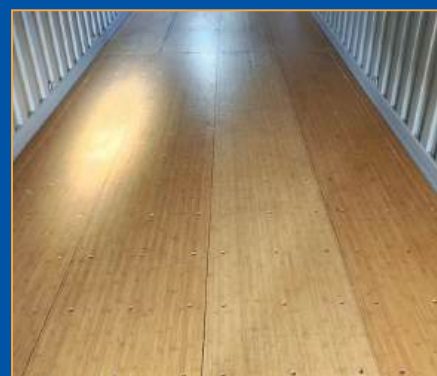
max. gross weight: 34000 kgs
tare weight: 4320 kgs

capacity

83.1 m³
europallet (1200 mm x 800 mm) 33
iso pallet (1200 mm x 1000 mm) 26

max. payload

29680 kgs



DRY UNIT TYPE A: BIRCH FLOOR

dimensions as above

ratings

max. gross weight: 34000 kgs
tare weight: 4260 kgs

max. payload

29740 kgs

DRY UNIT TYPE B: BAMBOO FLOOR

dimensions as above

ratings

max. gross weight: 34000 kgs
tare weight: 4660 kgs

max. payload

29340 kgs

- WATERBORNE PAINT
- VARIOUS SPECIAL DRY UNITS AVAILABLE
- ENVIRONMENTALLY FRIENDLY BAMBOO FLOOR



MORE INFO